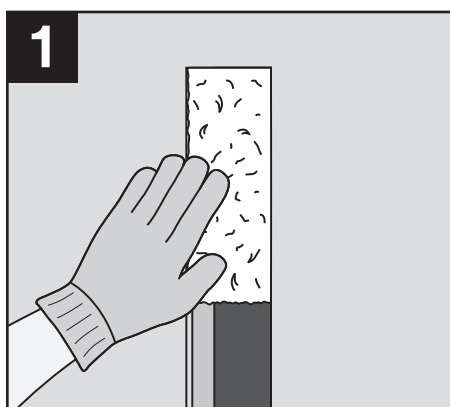
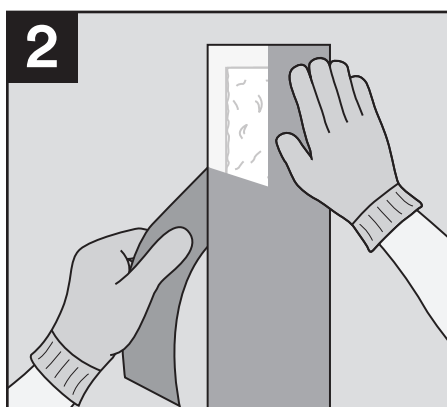


3M™ Fire and Water Barrier Tape 3M™ Smoke and Sound Tape

Installation: Wall to wall



Install mineral wool into the straight wall to wall gap.

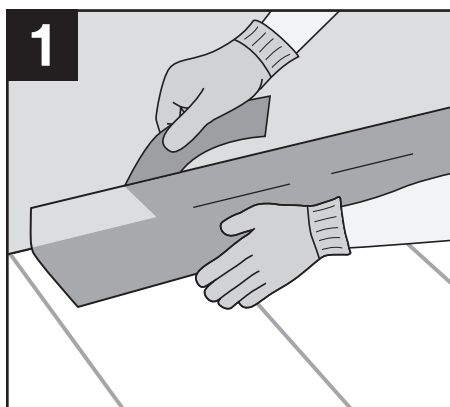


Peel back one corner of the liner to expose tape and adhere tape over joint.

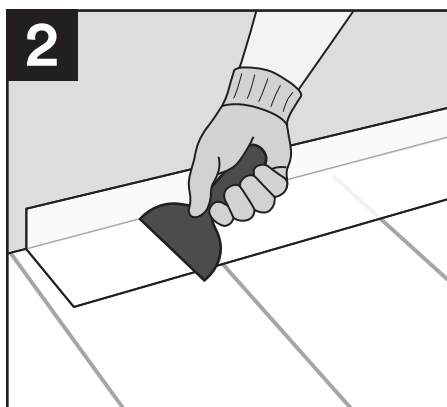


Press down firmly with hand or j-roller to adhere tape to surface.

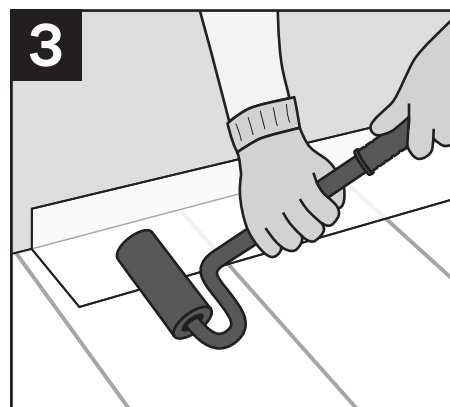
Installation: Floor to wall/wall to ceiling



Peel back one corner of the liner to expose tape and adhere tape over joint.



Press down firmly with plastic putty knife.

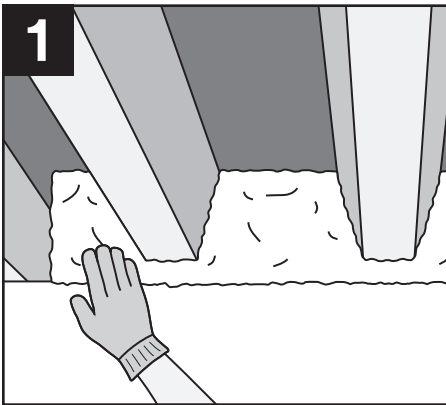


Press down firmly with hand or j-roller to adhere tape to surface.

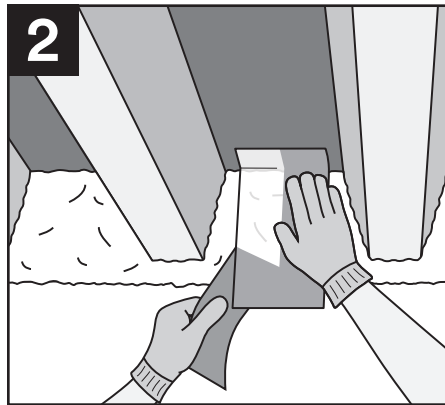
3M™ Fire and Water Barrier Tape

3M™ Smoke and Sound Tape

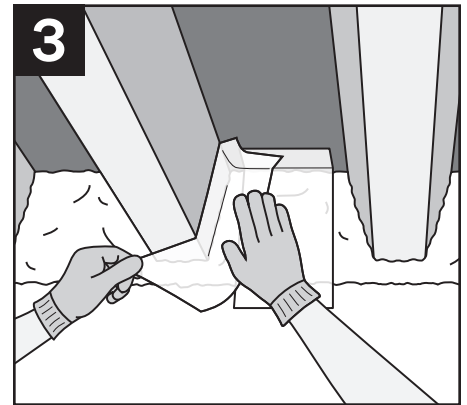
Installation: Fluted deck



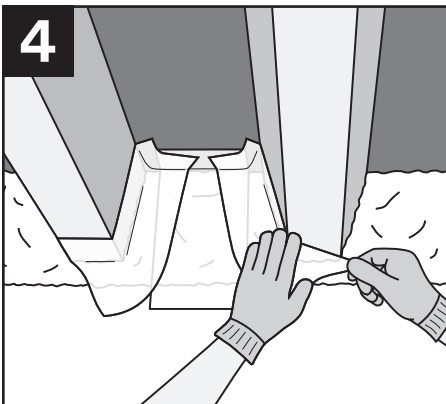
1
Stuff head of wall joint with mineral wool per system specifications.



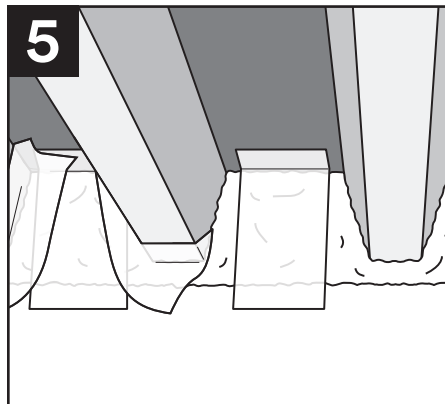
2
Cut tape to a length that is at least equal to the height of the flute area plus 2 inches. Install tape so that it is running vertically, over mineral wool, maintaining a minimum of 1 inch overlap onto bottom of steel deck and top of wall.



3
Cut second piece of identical sized tape. Starting in an upper corner, firmly press the tape into place, maintaining minimum of 1 inch overlap onto deck. Conform tape around bottom of steel deck peak using the “stretch, relax, press” method.



4
Repeat step 3 for the opposite corner of open flute.

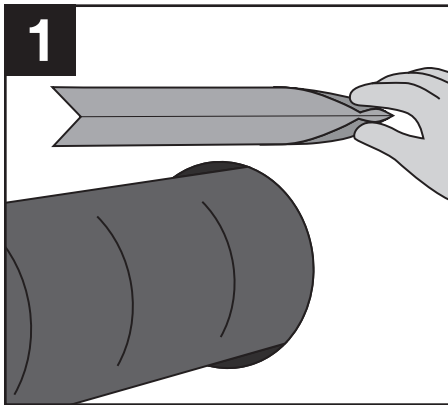


5
Continue to install tape over joint — installing center vertical piece first for each open flute section.

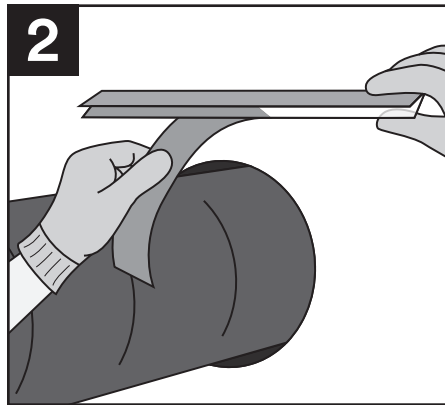
3M™ Fire and Water Barrier Tape

3M™ Smoke and Sound Tape

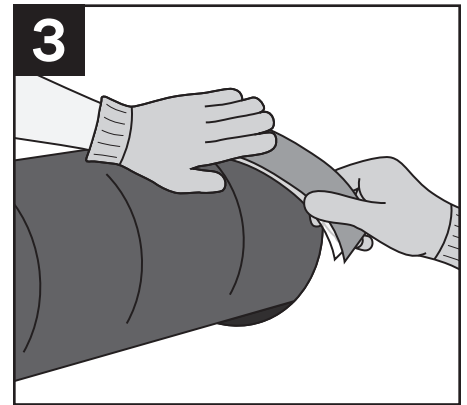
Installation: Through pen



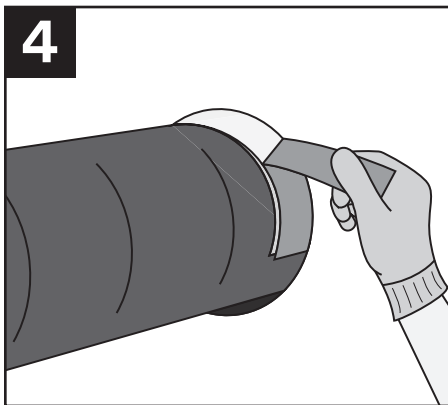
1
Cut a piece of tape equal to half the circumference of the penetrant. Fold tape along split liner.



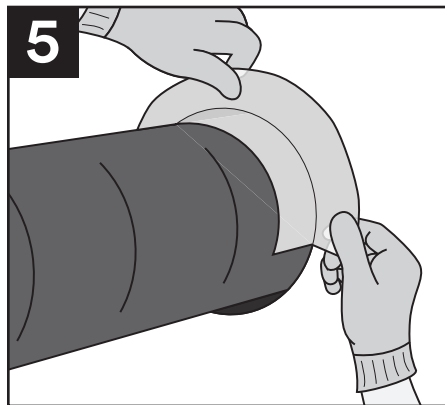
2
Peel off one half of split liner.



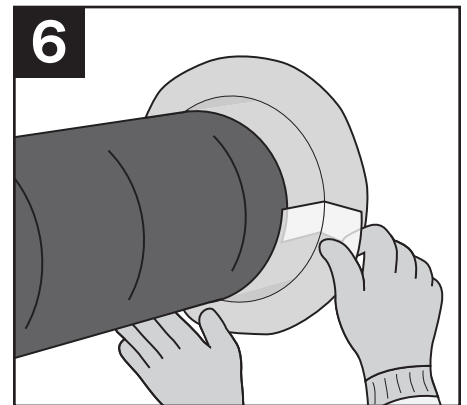
3
Position tape such that it overlaps a minimum of 1 inch onto the penetrant. Firmly press tape into position around penetrant.



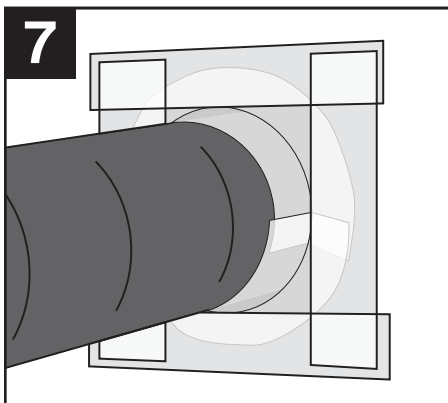
4
Peel off second half of split liner.



5
Unfold tape and adhere to substrate around penetrant.



6
Repeat for second half of penetrant. Ensure second piece of tape is long enough to overlap onto existing tape a minimum of one-half inch.



7
Cut four (4) pieces of tape to length to form a box around the penetration. Place tape into position to overlap onto existing tape and substrate to complete the tight seal.

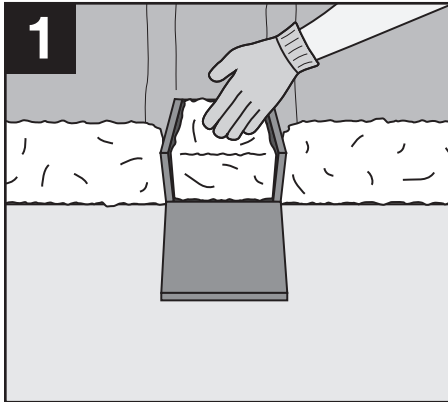
For technical support relating to
3M™ Fire Protection Products and Systems,
call: 1-800-328-1687

For more information on 3M™ Fire Protection
Products, visit: 3M.com/firestop

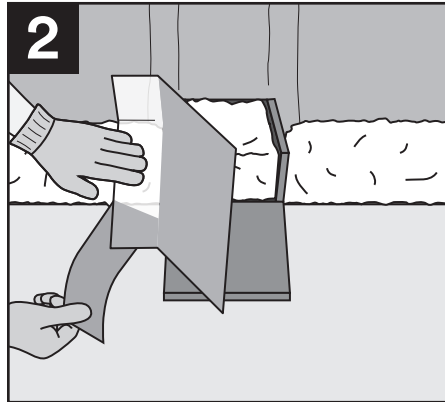
3M™ Fire and Water Barrier Tape

3M™ Smoke and Sound Tape

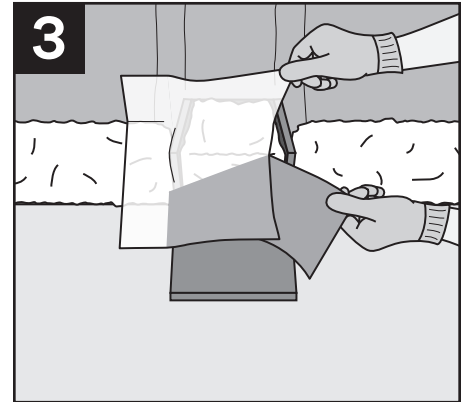
Installation: Curtain wall/perimeter joint interferences above joint (dead load anchors)



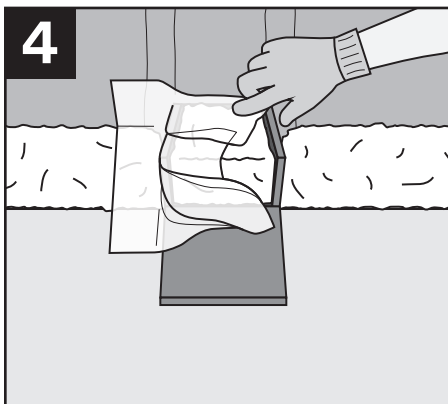
Pack mineral wool in between and around areas of anchor that are above the joint.



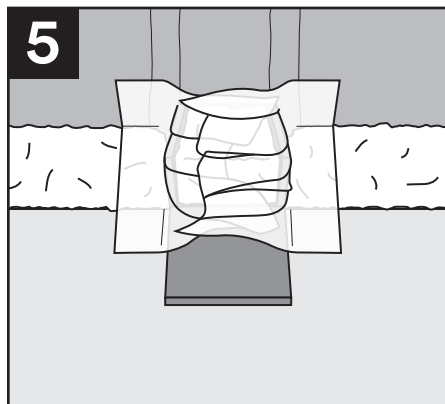
Cut a square piece of tape that is at least 2 inches longer than the width of the joint. Fold tape over along the slit liner. Remove skinny liner and press tape into place.



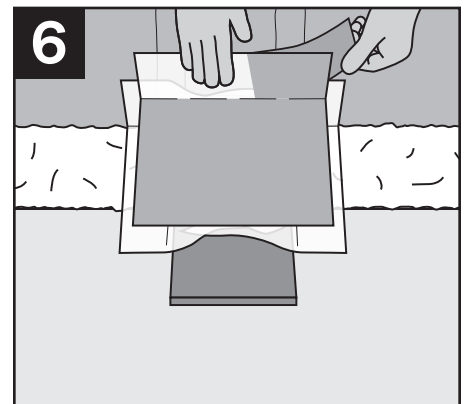
Remove second piece of liner, pull tape up around anchor and mullion.



Make sure tape has tight seal to curtain wall substrate, following contours of spandrel and framing. The tape will develop wrinkles and leave gaps over the anchor which will be covered by another layer of tape in steps 6–11.



Cut another square of tape, and apply to other side of anchor in the manner mentioned in steps 2–4.



Cut a piece of tape that is 2 inches longer than the width of the mullion or anchor (whichever is greater). Peel off skinny piece of liner and press to the vertical section of the mullion or wall above the anchor.

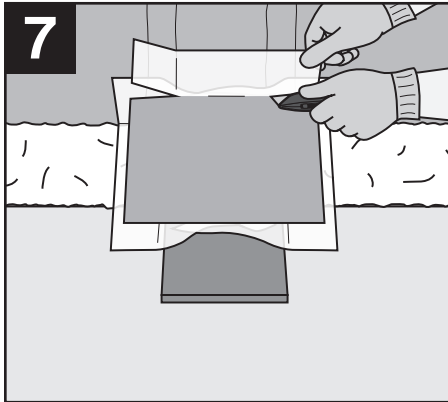
Steps 7–12 continued on next page.

3M™ Fire and Water Barrier Tape

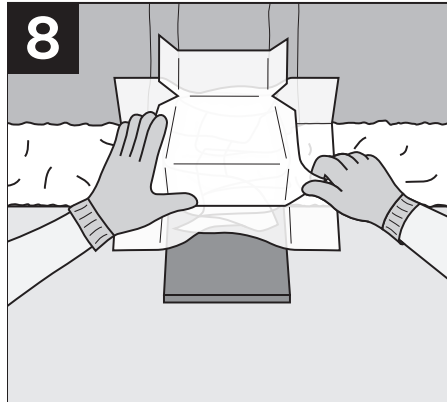
3M™ Smoke and Sound Tape

Installation: Curtain wall/perimeter joint *cont.*

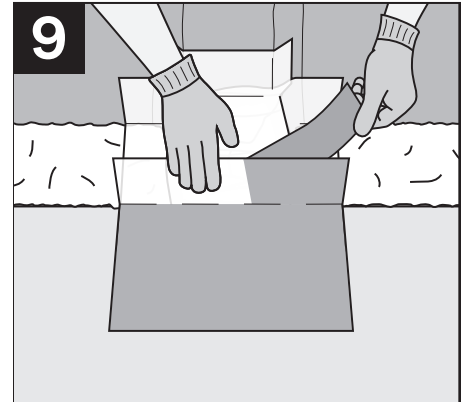
interferences above joint (dead load anchors)



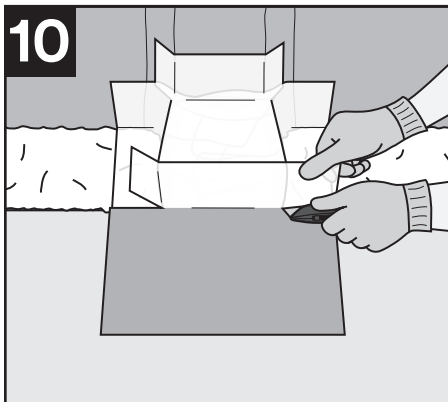
Slit the tape from the sides in to easily wrap the vertical section of the tape back.



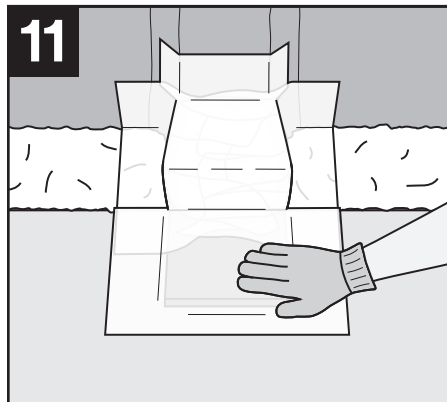
Remove the second piece of liner and press the tape into place over the top of the anchor. Fold and tuck the tape down into place.



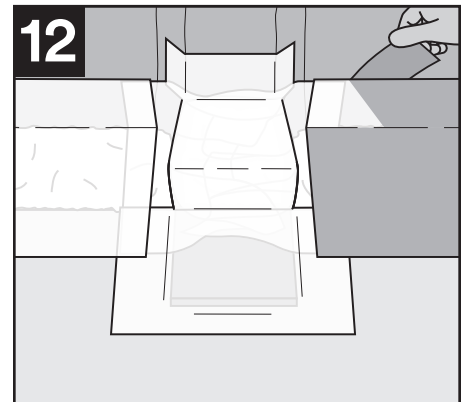
Cut another piece of tape and apply to seal the final edges of the anchor.



Slit the tape from the sides in again to easily wrap the vertical pieces back into place.



Remove the second piece of liner and press tape down into place.



Tape the straight run as usual. Follow floor to wall/wall to ceiling installation method on page 1.

Please refer to the Technical Data Page for additional information.

Product Selection and Use: Many factors beyond 3M's control and uniquely within user's knowledge and control can affect the use and performance of a 3M product in a particular application. As a result, customer is solely responsible for evaluating the product and determining whether it is appropriate and suitable for customer's application, including conducting a workplace hazard assessment and reviewing all applicable regulations and standards (e.g., OSHA, ANSI, etc.). Failure to properly evaluate, select, and use a 3M product and appropriate safety products, or to meet all applicable safety regulations, may result in injury, sickness, death, and/or harm to property. **Warranty, Limited Remedy, and Disclaimer:** Unless a different warranty is specifically stated on the applicable 3M product packaging or product literature (in which case such warranty governs), 3M warrants that each 3M product meets the applicable 3M product specification at the time 3M ships the product. 3M MAKES NO OTHER WARRANTIES OR CONDITIONS, EXPRESS OR IMPLIED, INCLUDING, BUT NOT LIMITED TO, ANY IMPLIED WARRANTY OR CONDITION OF MERCHANTABILITY, FITNESS FOR A PARTICULAR PURPOSE, OR ARISING OUT OF A COURSE OF DEALING, CUSTOM, OR USAGE OF TRADE. If a 3M product does not conform to this warranty, then the sole and exclusive remedy is, at 3M's option, replacement of the 3M product or refund of the purchase price. **Limitation of Liability:** Except for the limited remedy stated above, and except to the extent prohibited by law, 3M will not be liable for any loss or damage arising from or related to the 3M product, whether direct, indirect, special, incidental, or consequential (including, but not limited to, lost profits or business opportunity), regardless of the legal or equitable theory asserted, including, but not limited to, warranty, contract, negligence, or strict liability.



3M Industrial Adhesives and Tapes Division
3M Center, Building 225-3S-06
St. Paul, MN 55144-1000

Phone 800-328-1687
Web 3M.com/firestop

3M is a trademark of 3M Company. © 3M 2017. All rights reserved.